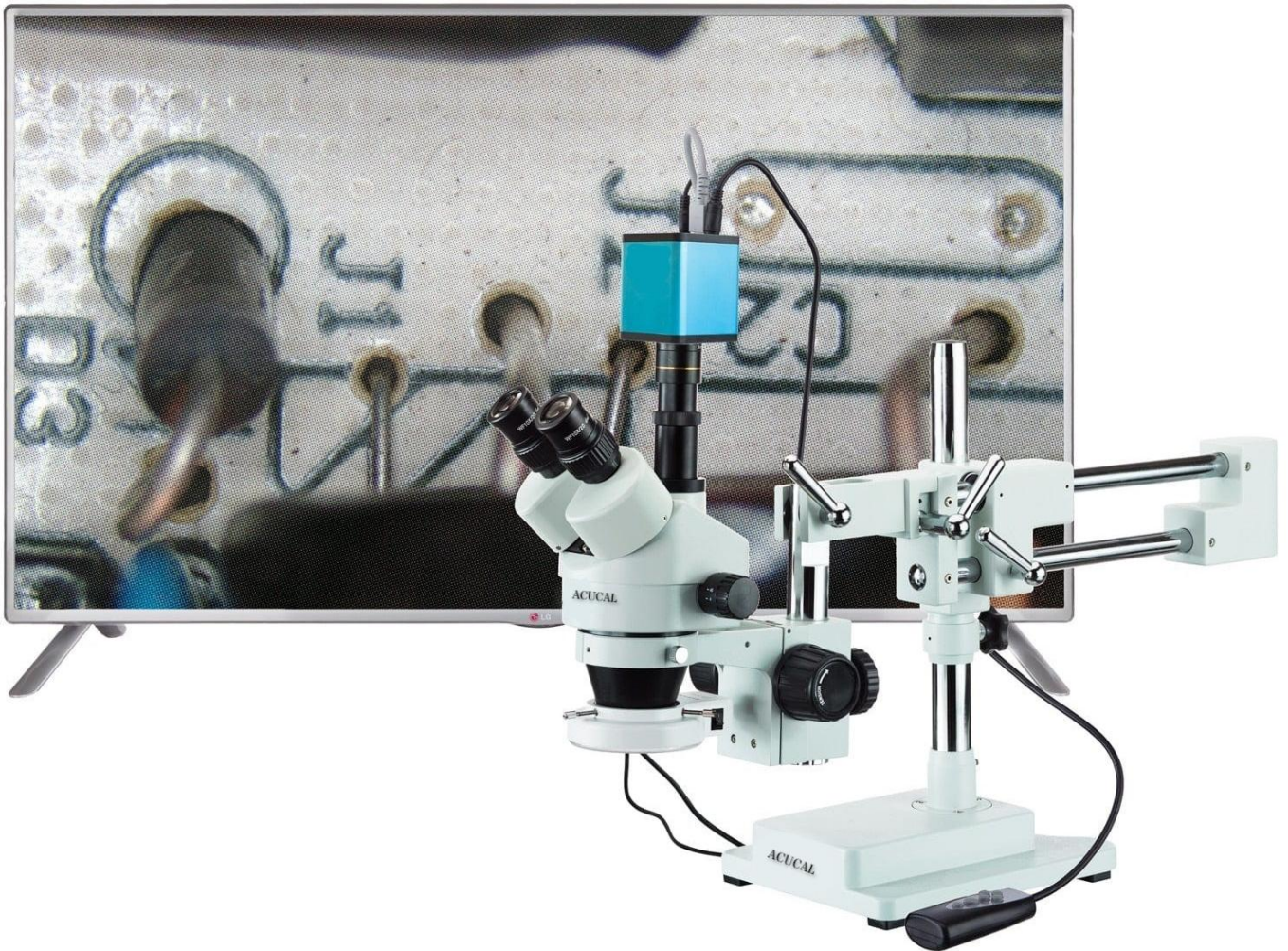


### DESCRIPTION

**S**tereomicroscopes are optical microscopes that give a three-dimensional (3-D) view of a sample and generally operate at low magnification. The 3-D image allows solid surfaces to be examined with greater clarity and permits the precise manipulation of samples during magnification.



**ACUCAL PCB Inspection Microscope is a heavy-duty, highly-flexible microscope designed for industrial applications.** This model is especially popular in the Quality Check, repair and engraving industries thanks to its ease-of-use and reliability. With its wide zoom range and double-arm boom-stand, this model will become an indispensable instrument in any workshop or lab.

### TECHNICAL SPECIFICATION

**Optical System:** Greenough Stereoscopic with Plan Achromatic optics

---

**Digital Imaging:** This microscope comes with a live-view HDMI camera designed specifically for microscopy. It's designed for live-view & Image Capturing –Video Recording capabilities, making it ideal for Quality Check and repair industries where on-screen monitoring is a necessity, and recording is must. It offers 1080pixel live-viewing over HDMI with super-smooth 60fps frame-rate. The included USB mouse allows you to control the camera through its easy-to-use interface. SD Card Storage facility to store the captured images and view on PC.

---

#### Trinocular Observation Head

- Observation head inclined at 45° rotatable at 360°.
  - Vertical phototube for micro photography.
  - Diopter adjustment ring on ocular tube ( $\pm 5$ ).
  - Inter-pupillary distance from 52mm to 75mm.
- 

**Eyepiece:** Extra Wide field 10X (paired) F.O.V. 22mm.

---

**Zooming Range & Ratio:** Click stop Zoom 0.8 X to 5.0X with magnification ratio of 6.3:1

---

#### Magnification Range

- 8X-50X (Standard)
  - 4X-100X with Additional Optics.
- 

**Working Distance:** 115 mm

---

#### Mechanical Body (Stand)

- **The multi-pivoting, double-arm stand provides a stable, flexible support system,** ideal for hands-on work. Use of a drop-down column allows the head to be positioned at virtually any angle. Ball-bearings provide smooth movement of the lateral arms, which can easily pivot the microscope out of the way when it is not needed. The heavy, steel base ensures the stability of the microscope, even when laden with attachments.

---

### Illumination System

- This package includes a LED OR FLUORSCENT ring-light for bright and cool illumination. This lightweight illuminator mounts to the microscope's objective housing, and projects a smooth, encompassing field of light over objects, eliminating most shadows. Whether used as the sole light-source or in combination with additional illuminators, the ring-light produces a crucial light pattern for virtually any application. Energy-efficient and producing low heat, this ring-light can be used with biological specimens as well as industrial.

---

### Standard Accessories

- One Trinocular stereo microscope head
- One pair 10X eyepieces
- One digital camera
- One HDMI Cable
- One Ring-light with One AC adapter
- Dust Cover
- Styrofoam Moulded pack
- One photo port attachment
- One double-arm boom-stand with focusing rack
- One USB mouse
- One USB power cable and adapter
- Operating Manual
- Guarantee Card

---

### FEATURES

- High quality optical components, providing sharp and striking contrast image and ensure flat image at big depth of field.
- Ease the tiredness with ergonomic design.
- With LED light for both incident and transmitted illumination, Providing even illumination and life expectancy can reach 6000 hours.
- Tailored for industrial site inspection. Very Rugged, easy to use & simple to maintain.
- With complete eyepieces, objectives and accessories it is an ideal instrument for industry assembling, inspection and teaching field.

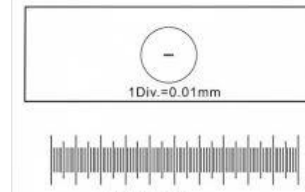
### OPTIONAL ACCESSORIES



Fibre Optics  
Illumination Halogen



X- Y Movement Stage  
Travel: (25 x 25) mm



Calibration Slide



Micrometer Eye Piece

### OPTIONAL ADDITIONAL OPTICS

- Eyepieces : WF 15X/Ø16 & WF 20X/Ø12,
- Plan Auxiliary Objectives: 0.5X , 0.7X & 2X ,



### OPTICAL DATA (WIDE RANGES OF OPTIONS & CONFIGURATIONS)

Auxiliary Objective	Working Distance (mm)	EYEPIECE					
		WF 10X/22		WF 15X/16		WF 20X/12	
		Total Magnification	Visual Field (mm)	Total Magnification	Visual Field (mm)	Total Magnification	Visual Field (mm)
	115	8-50X	27.5-4.4	12-75X	20.0-3.2	16-100X	15.6-2.5
0.5X	220	4-25X	55.0-8.8	6-37.5X	40.0-6.4	8-50X	31.2-5.0
0.7X	125	5.6-35X	39.3-6.3	8.4-52.5X	28.6-4.6	11.2-70X	21.4-3.4
2X	45	16-100X	13.8-2.2	24-150X	10.0-1.6	32-200X	7.8-1-3