

#### DESCRIPTION

*Inverted Metallurgical Microscopes are suitable to observe microstructure of Metallographic opaque or transparent object. ACUCAL Inverted metallurgical microscope is equipped excellent UIS optical system and modularization function design so that update system expediently and achieved polarization, dark field observation. Compact and steady main frame body is embodiment for the shock resistance. The ideal ergonomic design is adopted in this unit and has easier operation and wider space.*



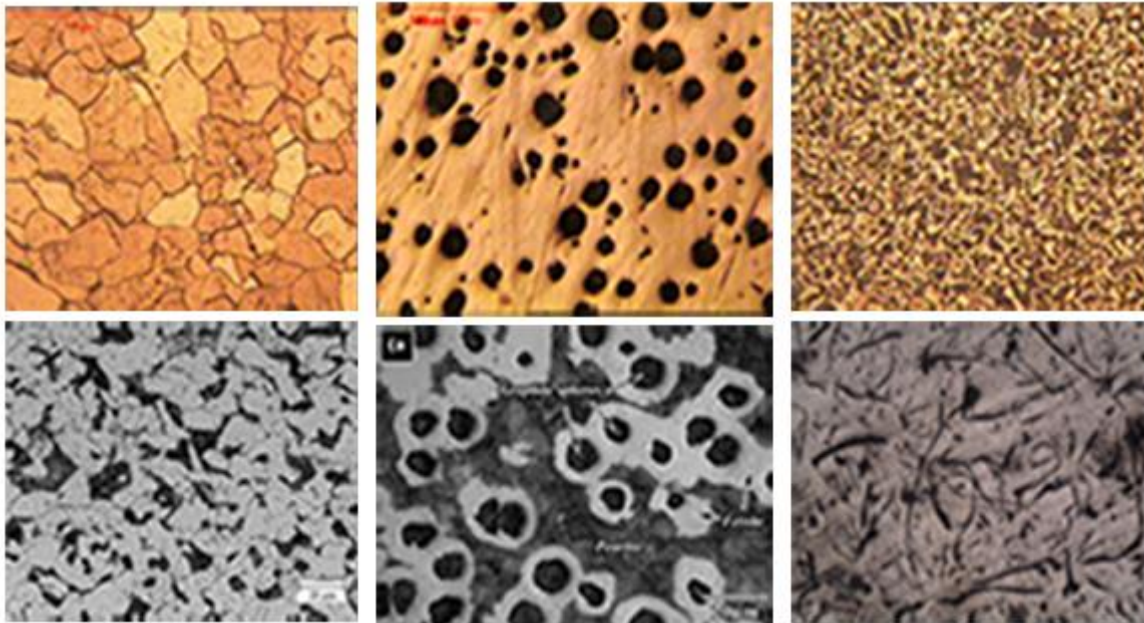
*This is ideal optical instrument for micro observation in metallographic structure and surface morphology, non destructive testing of materials in ceramics, textile, petrochemicals, defence, R&D establishments. It can be used in scientific research & universities for Metallography, Mineralogy, precision engineering etc in accordance with ASTM E112.*

### TECHNICAL SPECIFICATION

Standard Eyepiece	Extra Wide Field 10X/ Ø20 eyepiece pair , High Eyepoint, Antifungus.
Standard Objectives	Infinity Plan Achromatic (Bright Field, M Long Working Distance, Parfocal and precentered) : ∞4X/0.10, WD 28mm ∞10X/0.25, WD 10mm ∞20X/0.4, WD 5.8mm ∞40X/0.6, WD 2.9mm
Optional Objectives	∞2.5X/0.08, WD 11.7mm ∞5X/0.12, WD 15.4mm ∞50X/0.75, WD 0.32mm ∞100X/0.80, WD 2mm
Magnification	40X to 400X (With standard eyepiece & objective)
Eyepiece Tube/ Viewing Head	Sidentop (Butterfly Design) Viewing Observation Head Inclination angle is 30° and Interpupillary distance is 48~75mm.
Focusing system	Coaxial coarse/fine focus system, with tension adjustable ring, Manual Focus adjustment , pre-focusing lever Coarse Stroke: 37.7mm per rotation , Fine Stroke: 0.2mm per rotation
Nosepiece	Quintuple (Backward ball bearing inner locating)
Stage	<ul style="list-style-type: none"> <li>• Mechanical stage, coaxial x-y movement, Sample Holding Clip</li> <li>• Overall size: 160mm X 250mm,X-Y moving range: 120mm x 78mm . Sample Holding plate</li> <li>• Stable, vibration free, smooth and error free measurement at higher magnification</li> </ul>
Kohler Epi Illumination system	Halogen 6V/30W Or 5WLED, 85-240V AC/50Hz, Adjustable brightness through rotary control switch, on and off switch. Integrated field diaphragm , aperture Iris diaphragm.
Filter	Blue, Yellow, Green & Ground
Standard Accessories	Dust Cover, Operating Manual, Styrofoam moulded pack.

#### FEATURES

- UIS optical system and modularization function design
- Ergonomic design, low location of coaxial focus system
- Ergonomic design, with coaxial focus system
- Complete optional accessories.
- Horizontal Illumination with centring provision.
- Heavy Duty Transformer
- Perfect transmission system having localized illumination and flatness of field.
- Innovative stand structure, sharp image display, convenient operation and special design for viewing incubating cell tissue.



#### CONTACT US:

ACUCAL SERVICES  
901 A/6, Ashok Vihar, Ambala City-134003  
Haryana (India)  
Website: [www.acucalservices.com](http://www.acucalservices.com)