

INTRODUCTION

ACUCAL Microscopy cameras are particularly remarkable for their fast live images, short reaction times, high resolution and clear contrast. And they are compatible with almost all microscopes. Our product range covers digital Microscope Cameras with intuitive software for archiving, measurement, analysis and presentation. 100% reproducibility of the exposures and highly convenient remote control of the cameras and ensure a fast and economical workflow.



FEATURES

- Standard C-mount CMOS Sensor Camera.
- No compression, no interpolation.
- Support still image capture(JPEG, BMP, TIFF, PNG, TGA, TIF, DICOM) & Video Recording.
- USB3.0 interface, up to 480MPS, external power no need.
- Interfaced to a computer via USB3.0 for attaching camera to desktop/ through single wire with suitable C-mount camera adapter for rapid image download.
- Plug-to-use, suitable for imaging of any standard Biological, Stereo and Metallurgical microscopes for observations, such as bright field, DIC, phase contrast and fluorescence.
- Ease of operation; only take 5 minutes to master the friendly software.
- Standard C-Mount makes connection to any microscope easy.
- Integrated zinc aluminum alloy housing.
- Ultra-Fine color engine with perfect color reproduction capability.
- With advanced video & image processing application software
- Windows/Linux/macOS/Android multiple platform SDK.

FIELDS OF APPLICATION

Materialography
Quality Control
Pathology

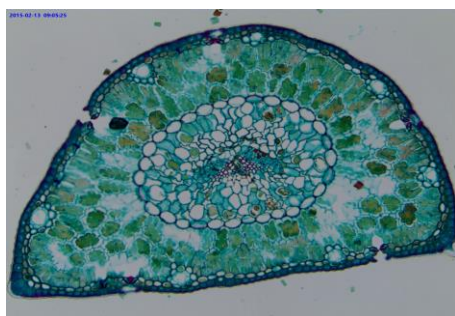
Inspection Industry
Geology
Forensic

Patrography
Mineralogy
Cell Biology

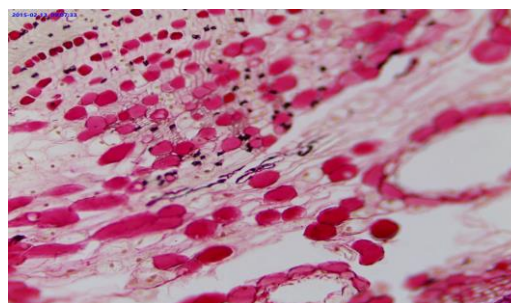
SPECIFICATION

Parameter	ACUCAM-20MP
Image Sensor	1" Single Plate type SONY Color CMOS, 20.0 Megapixel
Frame Rate	15@5440x3648 50@2736x1824 60@1824x1216
Pixel Size	2.4 μm x 2.4 μm
Signal/Noise	35.5 dB
Dynamic Range	65.3 dB
Digital Output	8 and 16-bit
ADC Conversion	8 Bit - 12 Bit
Read Noise	7 e- rms
Dark signal	0.21 mV at 1/30sec
Sensitivity	462 mV at 1/30sec & 0.724V/lux-sec
Color Depth	1 Bit; 4 Bit; 8 Bit; 24 Bit
Binning	1x1; 2x2
Scan Mode	Progressive Scan
IR filter	380-650 nm (IR-cut filter)
Power Requirement	PC USB bus power
Operating & Storing Temperature	-20° C to +60° C
Operating & Storage Humidity	10%-90%, Non-condensing
Exposure Time	0.1 ms to 15s
Auto Exposure & White Balance	Automatic / Manual
Gain Programmable	Interface Connector Standard USB 3.0 high-speed interface.
Shutter	Electronic Rolling
C-mount	Included

EXCELLENCE THROUGH EXPERIENCE



Pine Leaf



Ten Year Pine Stem