

INTRODUCTION

ACUCAL Microscopy cameras are particularly remarkable for their fast live images, short reaction times, high resolution and clear contrast. And they are compatible with almost all microscopes. Our product range covers digital Microscope Cameras with intuitive software for archiving, measurement, analysis and presentation. 100% reproducibility of the exposures and highly convenient remote control of the cameras and ensure a fast and economical workflow.



FEATURES

- Standard C-mount CMOS Sensor Camera
- No compression, no interpolation.
- Support still image capture(JPEG, BMP, TIFF, PNG, TGA, TIF, DICOM) & Video Recording.
- USB3.1 Type C interface, Speed up to 0.5GBPS, external power no need.
- Interfaced to a computer via USB port for attaching camera to desktop/ through single wire with suitable C-mount camera adapter.
- Plug-to-use, suitable for imaging of any standard Biological, Stereo and Metallurgical microscopes for observations, such as bright field, DIC, phase contrast and fluorescence.
- Ease of operation; only take 5 minutes to master the friendly software.
- Standard C-Mount makes connection to any microscope easy.
- Integrated Zinc Aluminum Alloy Metal housing.
- Ultra-Fine color engine with perfect color reproduction capability;
- With advanced video & image processing application software
- Windows/Linux/macOS/Android multiple platform SDK;

FIELDS OF APPLICATION

Materialography
Quality Control
Pathology

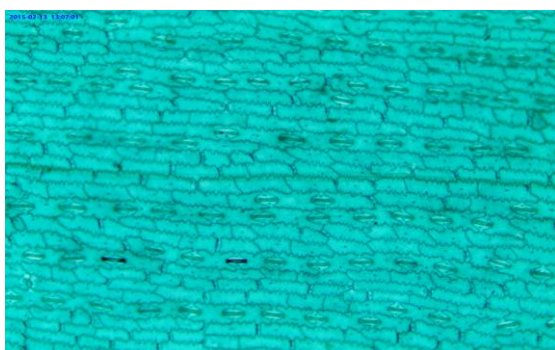
Inspection Industry
Geology
Forensic

Petrography
Mineralogy
Cell Biology

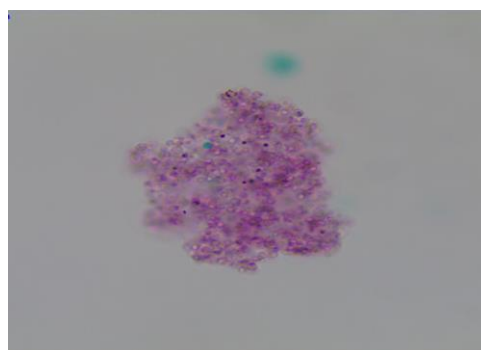


SPECIFICATION

Parameter	ACUCAM-18MP	ACUCAM-18MPB
Image Sensor	1/2.2" (5.86X4.66) Single Plate type SONY Color CMOS, 18.0 Megapixel	1/2.2" (5.86X4.66) Single Plate type SONY Color CMOS, 18.0 Megapixel
Frame Rate	17@4880x3720 40@2448x1836 55@1728x1296	17@4880x3720 40@2448x1836 50@1728x1296
Pixel Size	1.4 μm x 1.4 μm	1.2 μm x 1.2 μm
Spectral Range	380-650nm	380-650nm
Signal/Noise	35.5 dB	40.5 dB
Dynamic Range	65.3 dB	65.3 dB
Digital Output	8 and 16-bit	8 and 16-bit
Read Noise	7 e- rms	7 e- rms
Sensitivity	0.724V/lux-sec	0.724V/lux-sec
Scan Mode	Progressive Scan	Progressive Scan
Power Requirement	5VDC USB bus power	5VDC USB bus power
Operating Temperature	0° C to +60° C	0° C to +60° C
Operating Humidity	5%-100%, Non-condensing	5%-100%, Non-condensing
Exposure Time	0.1 ms to 15s	0.1 ms to 15s
Auto Exposure	Automatic / Manual	Automatic / Manual
White Balance	Automatic / Manual	Automatic / Manual
Gain Programmable	Interface Connector Standard USB 3.0 high-speed interface.	Interface Connector Standard USB 3.0 high-speed interface.
Shutter	Electronic Rolling	Electronic Rolling
Camera Dimensions	60x60x40mm	60x60x40mm



Rice Leaf Epidermis, W.M.



Yeast Stem

ACUCAL SERVICES

901 A/6 , Ashok Vihar

Ambala City-134003

Web: www.acucalservices.com

