

### INTRODUCTION

ACUCAL Microscopy cameras are particularly remarkable for their fast live images, short reaction times, high resolution and clear contrast. And they are compatible with almost all microscopes. Our product range covers digital Microscope Cameras with intuitive software for archiving, measurement, analysis and presentation. 100% reproducibility of the exposures and highly convenient remote control of the cameras and ensure a fast and economical workflow.



### FEATURES

- Standard C-mount CMOS Sensor Camera
- No compression, no interpolation.
- Support still image capture(JPEG, BMP, TIFF, PNG, TGA, TIF, DICOM) & Video Recording.
- USB3.1 Type C interface, Speed up to 0.5GBPS, external power no need.
- Interfaced to a computer via USB port for attaching camera to desktop/ through single wire with suitable C-mount camera adapter.
- Plug-to-use, suitable for imaging of any standard Biological, Stereo and Metallurgical microscopes for observations, such as bright field, DIC, phase contrast and fluorescence.
- Ease of operation; only take 5 minutes to master the friendly software.
- Standard C-Mount makes connection to any microscope easy.
- Integrated zinc aluminum alloy housing;
- Ultra-Fine color engine with perfect color reproduction capability;
- With advanced video & image processing application software
- Windows/Linux/macOS/Android multiple platform SDK;

### FIELDS OF APPLICATION

Materialography  
Quality Control  
Pathology

Inspection Industry  
Geology  
Forensic

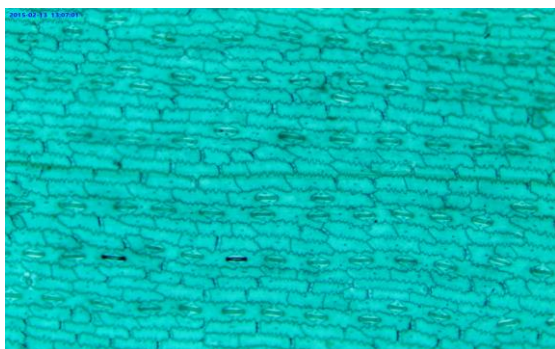
Petrography  
Mineralogy  
Cell Biology



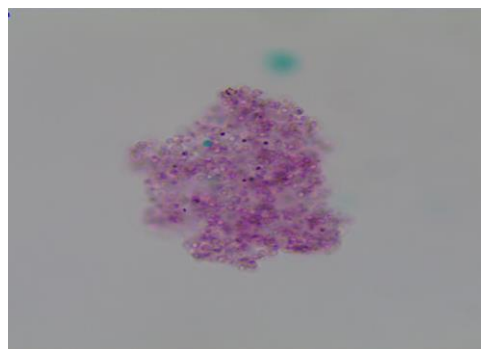
#### SPECIFICATION

- **Image Sensor:** 1/2.3" Color CMOS, 16.0 Megapixel
- **Frame Rate:** 6@4632 x 3488  
15@2320 x 1740  
26@1536 x 1160
- **Pixel Size:** 3.0  $\mu\text{m}$  x 3.0  $\mu\text{m}$
- **Signal/Noise:** 35.5 dB
- **Dynamic Range:** 65.3 dB
- **Binning:** 1x1, 2x2, 3x3
- **Read Noise:** 7 e- rms
- **Sensitivity:** 0.724V/lux-sec
- **Scan Mode:** Progressive Scan
- **Power Requirement:** USB bus power, Operating Temperature 0° C to +60° C
- **Operating Humidity:** 5%-100%, Non-condensing
- **Exposure Time:** 0.2 ms to 2000ms
- **Auto Exposure:** Automatic / Manual
- **White Balance:** Automatic / Manual
- **Bit Depth :** 10-12 bit
- **Gain Programmable:** Interface Connector Standard USB 3.1 high-speed interface.
- **Shutter:** Electronic Rolling

#### EXCELLENCE THROUGH EXPERIENCE



Rice Leaf Epidermis, W.M.



Yeast Stem



**ACUCAL SERVICES**

**901A/6 , Ashok Vihar**

**Ambala City-134003**

**Web: [www.acucalservices.com](http://www.acucalservices.com)**