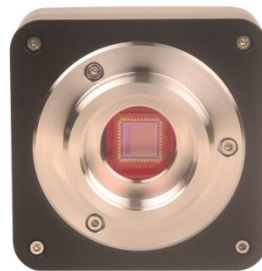


INTRODUCTION

ACUCAL Microscopy cameras are particularly remarkable for their fast live images, short reaction times, high resolution and clear contrast. And they are compatible with almost all microscopes. Our product range covers digital Microscope Cameras with intuitive software for archiving, measurement, analysis and presentation. 100% reproducibility of the exposures and highly convenient remote control of the cameras and ensure a fast and economical workflow.



FEATURES

- Standard C-mount CMOS Sensor Camera
- No compression, no interpolation.
- Support still image capture(JPEG, BMP, TIFF, PNG, PCX, TGA, TIF, DCM)
- USB2.0 interface, up to 480MPS, external power no need.
- Interfaced to a computer via USB2.0 technology for rapid image download.
- Plug-to-use, suitable for shooting of any standard Biological, Stereo and Metallurgical microscopes.
- Ease of operation; only take 5 minutes to master the friendly software.
- Standard C-Mount makes connection to any microscope easy.
- Integrated zinc aluminum alloy housing;
- Ultra-Fine color engine with perfect color reproduction capability;
- With advanced video & image processing application software
- Windows/Linux/macOS/Android multiple platform SDK;

FIELDS OF APPLICATION

Materialography
Quality Control
Pathology

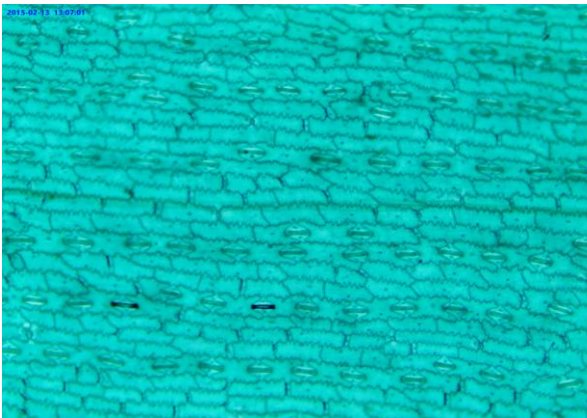
Inspection Industry
Geology
Forensic

Patrography
Mineralogy
Cell Biology

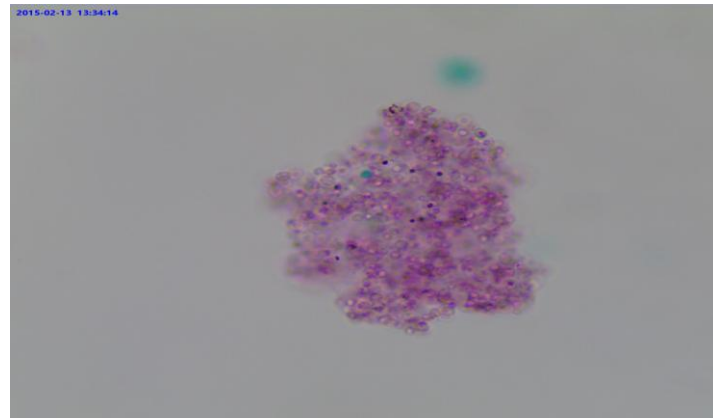
SPECIFICATION

- **Image Sensor:** 1/2.3" 10.0 megapixel color CMOS
- **Frame Rate:** 27 fps at 896 X 684
- **Max. Resolution:** 3584 X 2748 (10M Pixels)
- **Pixel Size:** 1.67 μm x 1.67 μm
- **Signal/Noise:** 34 dB
- **Dynamic Range:** 65.2 dB
- **Digital Output:** 8 and 16-bit
- **Read Noise:** 7 e- rms
- **Sensitivity:** 0.31V/lux-sec 550nm
- **Scan Mode:** Progressive Scan
- **Power Requirement:** USB bus power, Operating Temperature 0° C to +60° C
- **Operating Humidity:** 5%-100%, Non-condensing
- **Exposure Time:** 0.4 ms to 2000ms
- **Auto Exposure:** Automatic / Manual
- **White Balance:** Automatic / Manual
- **Gain Programmable:** Interface Connector Standard USB 2.0 high-speed interface.
- **Shutter:** Electronic Rolling

EXCELLENCE THROUGH EXPERIENCE



Rice Leaf Epidermis, W.M.



Yeast. Smear