

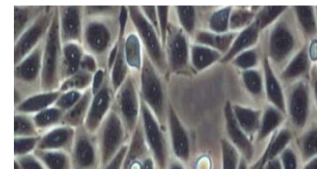
DESCRIPTION

ACUCAL Advance Research Biological Microscope is professional for biomedicine, pathological diagnosis and other science research. Excellent optical performance, Stable and compact mechanical structure, ergonomic design & layout, comfortable to use, can operate the microscope in a natural posture.

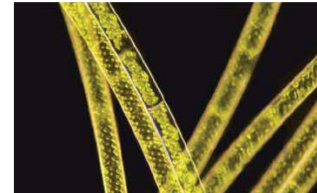
Building Blocks Design for combining multiple functions, fluorescence, phase contrast, polarizing, dark field attachments can be assembled on the basis of bright field observation.



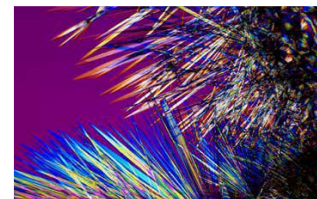
CONTRAST TECHNIQUES



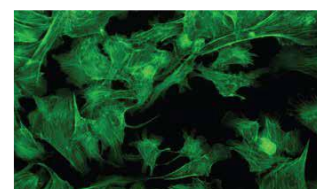
Phase Contrast



Dark Field



Polarisation



Fluorescent

Infinity color corrected optical system, Koehler illumination system presents a clear & bright micro image under each magnification. Widely apply to clinical diagnosis, teaching experiment, pathological test and other mico fields.

It is the perfect laboratory microscope for life sciences, histology, microbiology etc.

Condenser

- Bright field swing out achromat Condenser NA 0.9/1.25 (2X-100X) with focusable with rack & pinion movement having Aspheric Lens.
- Color coded Turret condenser for Bright field, Phase contrast & Dark Field NA 0.9/1.25 (2X-100X) with focusable with rack & pinion movement having Aspheric Lens. (Optional)

Mechanical Stage

- Hard core anodized surface / Ergo stage ceramic surface Manual right hand & Scratch less Double Plate Stage with 2-Slide holder with Vernier reading.
- Ultrahard ceramic surface Double Layer Mechanical Stage Table Size 175x145mm, Moving Range 76x50mm,
- Right hand control and equipped with Double specimen holder on left side for two slides. Slide holder with one hand operation
- Wear, scratch resistant & Spill resistant, Coaxial stage with right hand low XY drive control with rotating mechanism.

Focusing Control

- Co axial Graduated Coarse and Fine focusing knob on gear systems for smooth operations.
- Coarse Stroke: 30mm, Fine Division 0.002mm per rotation. 25mm Z travel range.
- Torque adjustment focus knob with adjustable focus stop.

Illumination

- Transmit Kohler Illumination, Brightness Adjustable, V6V30W Halogen, External Lamp House OR Transmit Kohler Illumination, Constant Color Brightness Adjustable, 5W LED, Built-in Main Body
- Brightness control knob.
- Life time more than 50,000 hours.

Electronics: Kohler Universal Input 100-240 V AC, 50/60 Hz.

Standard Accessories : Operating & Service Manual, Dust Cover, Guarantee Card and Thermocole Molded packing & outer corrugated box, spare bulb.

Optional Accessories : Polarizer, Analyzer & λ Wave Plate, Dark Field,

Phase Contrast Unit – Centered Telescope Eyepiece, Green Filter & PLAN PHASE Objectives:

- ∞ 10x/0.25, W.D.10.8mm PHASE
- ∞ 20x/0.40, W.D.1.5mm, PHASE
- ∞ 40x/0.65, W.D.0.80mm, Spring Loaded , PHASE
- ∞ 100x/1.25, W.D.0.21mm, Spring Loaded , PHASE

Epi Fluorescent Attachment:

ACSU6LED6FP	3W LED Epi-Fluorescence Attachment, Fly-Eye Lens Illumination, With 6 Filter Position, With Attachable UV Shield, B, G, UV excitation Filters
ACSU6MER6FP	100W Mercury Epi-Fluorescence Attachment, Fly-Eye Lens Illumination, With 6 Filter Position With Attachable UV Shield, B, G, UV excitation Filters

Fluorescence Filters (Standard)

- B (EX460-490nm,DM500,EM520LP)
- G (EX510-550nm,DM570,EM590LP)
- V (EX400-410nm,DM455,EM460LP)
- UV (EX330-385nm,DM400,EM420LP)

Fluorescence Attachment-Halogen/LED & PLAN FLUOR SEMI APO Objectives:

- ∞ 4x/0.13, W.D.16.43mm FLUOR
- ∞ 10x/0.30, W.D.8.13mm FLUOR
- ∞ 20x/0.50, W.D.2.03mm, FLUOR
- ∞ 40x/0.75, W.D.0.73mm, Spring Loaded , FLUOR
- ∞ 100x/1.28, W.D.0.18mm, Spring Loaded , FLUOR

PRODUCT FEATURES :

Easy to adjust, comfortable to use
&

Low hand focus mechanism

The Platform is ergonomically designed for maximum comfort, and the tension can be adjusted, so that the hand can be placed in a comfortable position and the stage can be moved easily.



Safe Carrying Design:

The Hole on the back of the body make it safe and easy when carry the whole microscope.



Slicing up/down with one hand

The platform bump guide mechanism is convenient for one-handed up sectioning and one-handed down sectioning, freeing hands during microscopic observation and operation, and improving working speed.



CONTACT US:

ACUCAL SERVICES
901 A/6, Ashok Vihar, Ambala City-134003
Haryana (India)
Website: www.acucalservices.com