

DESCRIPTION

The ACUCAL Digital Biological Microscope is a new generation microscope with LED illumination and built-in digital camera transmits live streaming images to a computer through a normal USB connection. With the included software you can view and capture images directly onto your Tablet screen.



APPLICATIONS

- Widely used in Hospitals, Laboratories, Schools, Wastewater treatment plants, Veterinary, Histology and Pathology.
- To View blood cells, cheek cells, parasites, bacteria, algae, tissue, and thin sections of organs.
- To view samples that cannot be seen with the naked eye.

TECHNICAL SPECIFICATION

Optical System

- High Contrast, Plan Infinity Corrected, Strain free Optical System

Observation Head

- Binocular/Trinocular Observation head inclined at 30°.
- Vertical phototube for micro photography.
- Diopter adjustment Facility on Eyepieces
- Inter-pupillary distance from 50mm to 75mm.

Eyepiece

- Wide field 10X (paired) F.O.V. 22mm
- Anti-fungal & Anti-reflection hard coated

Nose Piece

- Inward Quintuple Revolving, ball bearing type with positive click stops

Objectives: High Contrast Plan Infinity Corrected Anti-fungal & Anti-reflection, Uniformly Centred, Interchangeable & Parfocal

- Plan Achromatic Objective 4X (NA 0.10, WD 25mm)
- Plan Achromatic Objective 10X (NA 0.25, WD 6.7mm)
- Plan Achromatic Objective 40X (SL, NA 0.65, WD 0.6mm)
- Plan Achromatic Objective 100X (SL, Oil, NA 1.25, WD 0.17mm)

Mechanical Stage

- Rackless & Starchless Double Plate Stage
- Size 180mm X 160mm, X/Y Travel Range 75mm X 50mm
- Division 0.1mm Low drive right side movement

Condenser

- Centerable Abbe Condenser NA 1.25 with Aspheric Lens.
- Continuously variable Iris Diaphragm with removable frosted white filter, Anti-fungal & Anti-reflection coated
- Rack & Pinion movement on stainless steel guides.

Focusing Control

- Co axial Coarse and Fine focusing on gear systems for smooth operations.
- Fine adjustment 0.2mm per rotation

Illumination

- LED 3.5W, 3V illumination with variable control.
- Up to 100,000 hours of LED Life.

Electronics

- Kohler Universal Input 100-240 V AC, 50/60 Hz.

Standard Accessories

- Operating Manual, Dust Cover, Guarantee Card and Styrofoam Molded pack.

EXCLUSIVE SCREEN FEATURES

Display

- 11.6 " Window based Tablet PC, 360° Rotatable.

Camera

- Ultra Cam 5.1 Megapixels Resolution Research Grade.

Software

- Preloaded Capture and Measurement software.
- Features like clicking pictures, capturing videos, measurements, auto exposure, colour adjustment, stitching, binning, calibration and many more.

Operating System

- Window 10 Home

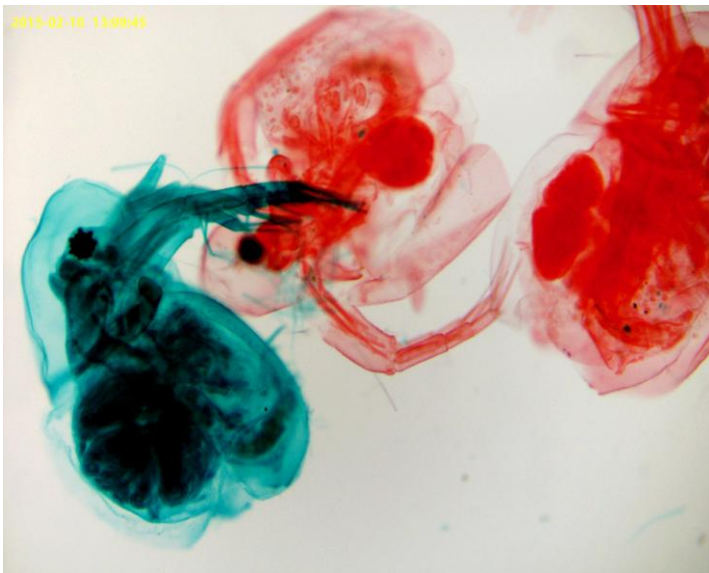
Memory

- Inbuilt Memory 64GB with 4 GB RAM.

I/O Ports

- USB 3.0 x 1, Mini HDMI x 1, microSD Card slot x 1

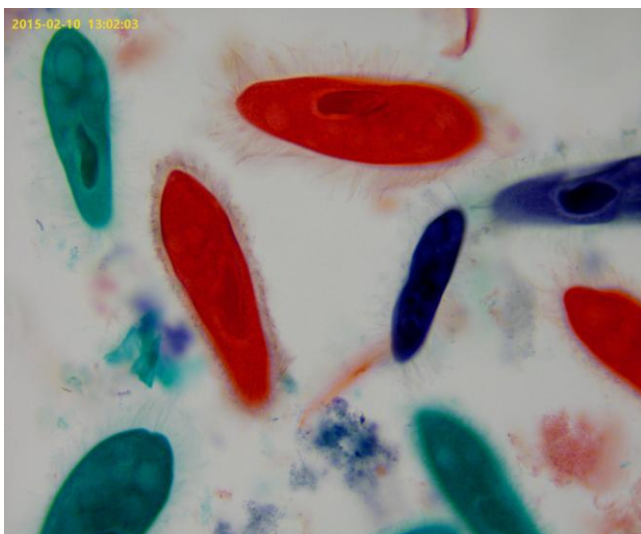
EXCELLENCE THROUGH EXPERIENCE



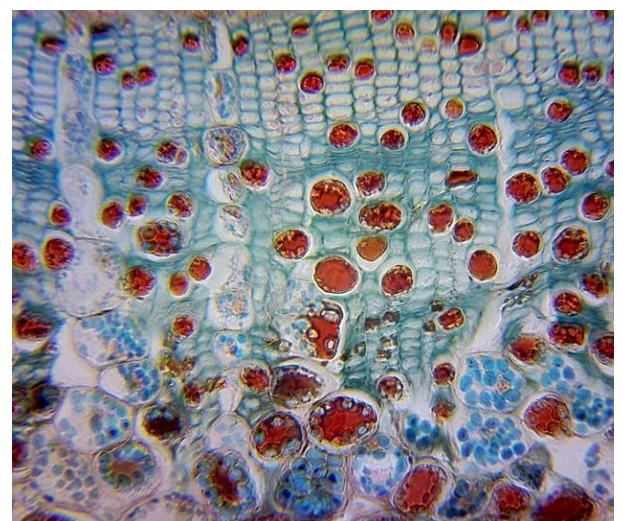
Daphnia (whole_mount)



Earthworm (cross_section)



Paramecium_(whole_mount)



Pine_stem